

COFFEE – NURSERY PRODUCTION

NUTRIENT AND STIMULATION PROGRAM

codamin radicular
dalgin active
codafol 14-6-5
codasting
sthenos
osmoplant

Cafedak



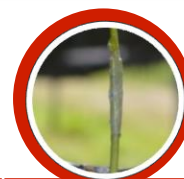
Made for
Hawai'i

**coda**

COFFEE – NURSERY PRODUCTION

This CODA program for the cultivation of COFFEE (*Coffea arabica*) grown in nurseries, together with the advice of our SAS technicians, is a tool that will help growers optimize crop development, production, and quality. Incorporating the products below into your program will help increase nutrient availability and uptake, promote healthier growth, and biostimulate your crop to mitigate abiotic stress.

APPLICATIONS



VIA	Product	Sowing	Germination	Complete Emergence	Seedling Grafting	Vegetative Growth	Step-up Into Final Container	Vegetative and Root Growth	Before or At Transplant
	codamin radicular		3 fl. oz./5-gal. H2O				3 fl. oz./5-gal. H2O		
	dalgin active				2 fl. oz./ 5-gal H2O				
	codafol 14-6-5					2 fl. oz./ 5-gal H2O		2 fl. oz./ 5-gal H2O	
	codasting					1 fl. oz./ 5-gal H2O		1 fl. oz./ 5-gal H2O	
	osmoplant					2 fl. oz./ 5-gal H2O		2 fl. oz./ 5-gal H2O	2 fl. oz./ 5-gal H2O
	sthenos								2.5%
	Cafedak			2 fl. oz./ 5-gal H2O		2 fl. oz./ 5-gal H2O		2 fl. oz./ 5-gal H2O	

RECOMENDATIONS

- Apply **codamin radicular** at a minimum interval of 10 days in order to promote better root development and nutrient capture.
- If seedling grafting is used in production, apply **dalgin active** shortly after in order to reduce the likelihood of tissue oxidation at the grafting site.
- **codafol 14-6-5** combined with **codasting** can be applied ever 2 weeks in order to promote better flushes of vegetative growth.
- Apply **sthenos** and **osmoplant** before or at transplant in order to protect the trees from sunburn and transplant shock that can occur after transplant into fields exposed to full sun. Both are compatible in the same tank mix.
- **Cafedak** is an efficient micronutrient pack specifically catered to coffee, applied every 30 days, that can help the plants tolerate biotic stresses better, such as Coffee Leaf Rust (CLR) and *Cercospera* Leaf Spot.



sas

Sustainable Agro Solutions, S.A.U

Ctra. N-240, Km.110 - 25100 Almacelles - Lleida - España
t. (34) 973 74 04 00 / info@sas-agri.com
www.sas-agri.com



Made for
Hawai'i