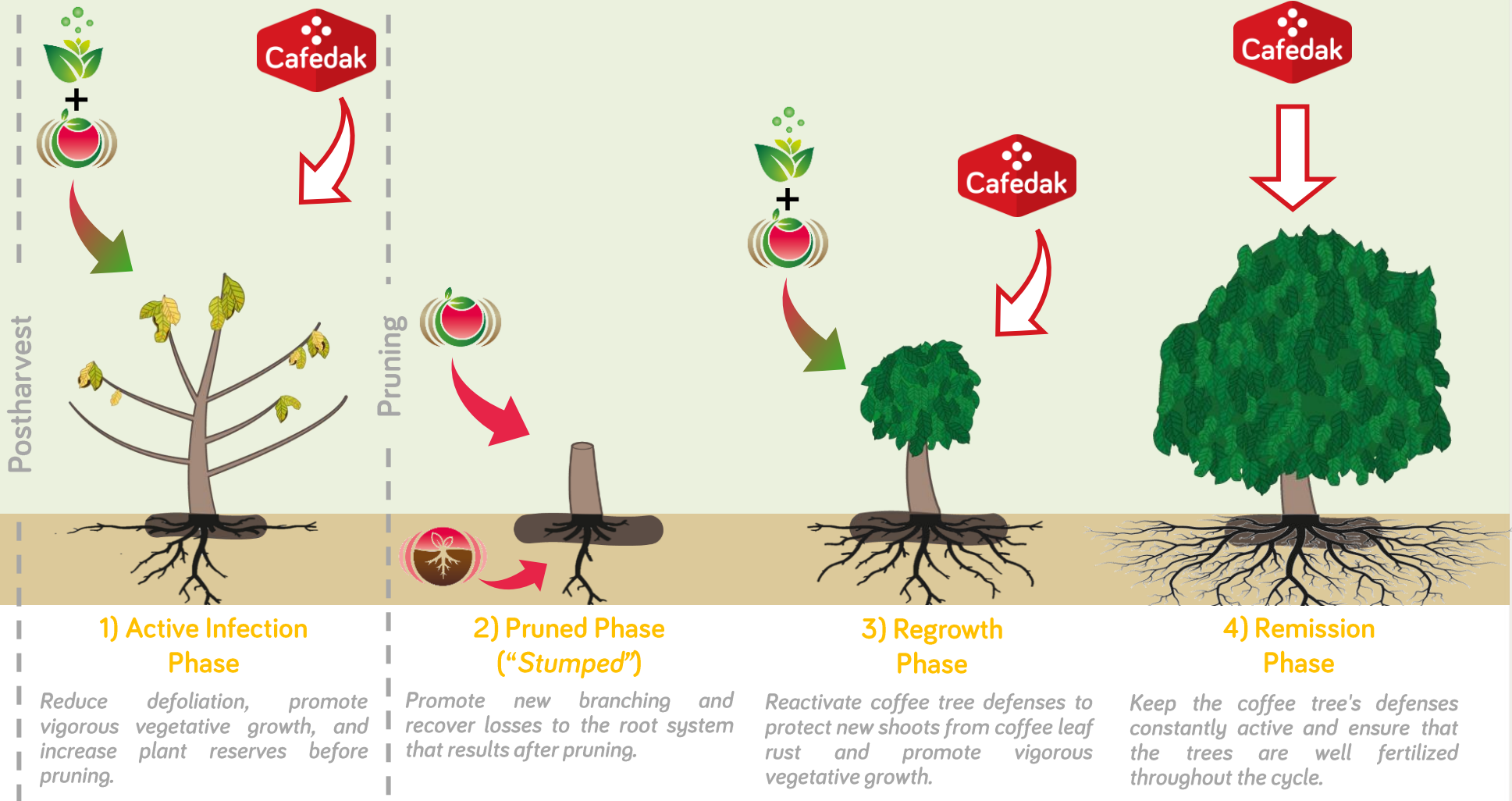


# CODA AND CAFEDAK STRATEGY FOR HAWAIIAN COFFEE TREE RECOVERY FROM COFFEE LEAF RUST INFECTIONS

## WHAT IS THE STRATEGY?




# CODA AND CAFEDAK STRATEGY FOR HAWAIIAN COFFEE TREE RECOVERY FROM COFFEE LEAF RUST INFECTIONS

## PRODUCT APPLICATIONS

### 1) Active Infection Phase and 3) Regrowth Phase



**Cafedak**  
2.5 pt./acre - Foliar  
Nº of applications depends on how many days after harvest stumping was completed.  
Min. days between applications: 20 – 30 days




**codafol 14-6-5 + codasting**  
2 pt. + 1.5 pt./100 gal. H2O - Foliar  
1 – 2 applications  
The two products are applied in the same broth  
Min. days between applications: 7 – 10 days

### 2) Pruned Phase



**codasting**  
1 pt./100 gal. H2O – directly onto trunk wood  
1 application



**codamin radicular**  
1 gal./acre- Drench/Fertigation  
1 – 2 applications  
Min. days between applications: 10 – 15 days

### 4) Remission Phase (*Repeat applications of Cafedak*)

## OBSERVATIONS

- The application of **codamin radicular** is more optimal if applied 1 – 2 days before the applications of granular **NPKs** to increase fertilizer absorption.
- If it was possible to recover some foliage on the tree before pruning, it isn't necessary to apply **codasting** in 2) Pruned Phase.
- The effects of **Cafedak** are not curative. In 3) Remission Phase the product can be rotated in with fungicides to improve the effectiveness of any organic or conventional phytosanitary program and reduce the chemical load on the trees.