

## **Kona Cooperative Extension – Events and Announcements Newsletter**

Volume 14-2: February 2020

**Dear Growers and Friends,**

### **Start low, maintain, and end low with CBB IPM**

This may be repetitive but is very important for CBB control. If you have coffee berries on the trees, keep on top of your CBB monitoring and spray to protect these young berries. Don't wait until CBB are in the C/D position to start spraying. Kill CBB in the A/B position and keep your infestation low at the beginning of the season. Use IPM recommendations to maintain this low level and have a better opportunity to harvest cherry with low damage rates. Continue walking your farm and remove any missed berries and raisins from the past season. Continue harvesting and spraying for CBB if you have year-round coffee.

Monitoring, 30 trees sampling and dissection information are found at <https://bit.ly/2SCClrS>

Spraying details can be read at <https://bit.ly/3bIC7Hr>

### **Black twig borer**



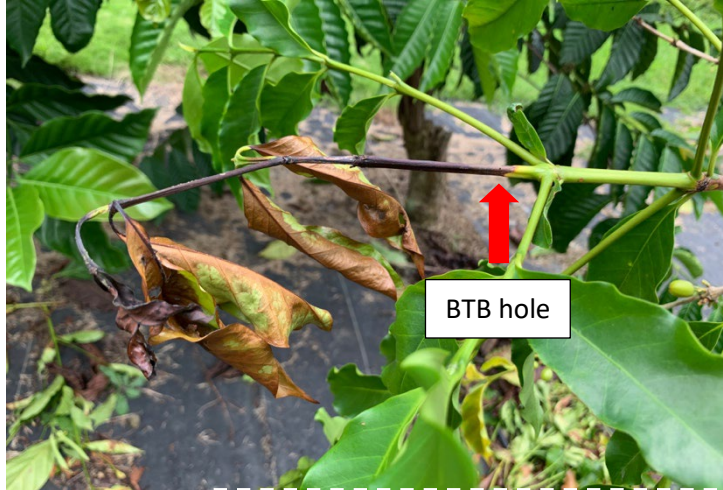
Don't forget to scout for black twig borer and trim off branches to help manage populations and damages caused by BTB. Do not snap or break off branches with BTB holes. 1) Find the BTB hole, which is usually on the underside of the lateral and about 1.2 mm wide, 2) Use pruning shears to trim/cut the branch about 1-2 inches behind the hole, and 3) Destroy the branch with hole (still intact) by bagging and dumping or burning with a valid ag burn permit. Trimming versus breaking-off branches helps contain BTB, remove infested material, and may minimize the escape and dispersal of new adults. See photos and additional information about BTB and its management at <https://bit.ly/2SEAQK4>

Apply for and learn about an ag burn permit by visiting <https://bit.ly/3bR3Y86>

### **Banana moth**

With the emergence of new verticals and shoots, banana moth may present a challenge to maintaining healthy and strong verticals. These moths, which are nocturnal, lay eggs on succulent, new growth. The caterpillars weaken verticals by chewing at the base or by entering the vertical from the base.

Learn more about banana moth and how to manage this pest, visit <https://bit.ly/32a100a>

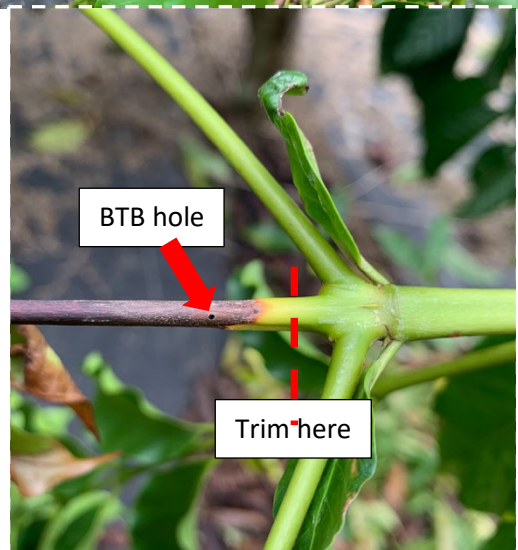


### **Determining amount of pesticide per tankful or gallon**

If you have questions about pesticide product use or calculating how much product to add per gallon of water, please contact me at [andreak@hawaii.edu](mailto:andreak@hawaii.edu) or 808-322-4892.

### **Away from the office**

I will be on vacation and away from the office for work events from March 10-20 and March 30 to April 6. Please expect a delay in responses if you contact me during these dates. If you don't hear from me after the 20<sup>th</sup> and before the 30<sup>th</sup> or after the 6<sup>th</sup>, please follow-up with me.



Thank you,  
Andrea

---

**UH CTAHR Cooperative Extension Offices was closed on the following days:**  
Monday, February 17th in observance of Presidents' Day

---

Visit <https://www.hawaiicoffeeed.com/events-and-announcements> for additional information on the following events, announcements and more.

---

## Little Fire Ant Workshop - Kona



**COOPERATIVE EXTENSION**  
UNIVERSITY OF HAWAII AT MĀNOA  
COLLEGE OF TROPICAL AGRICULTURE AND HUMAN RESOURCES



# Little Fire Ant Workshop for Commercial Coffee, Fruit and Nut Growers

Wednesday, February 26, 2020

9:00 am – 11:30 am

Kona Cooperative Extension Service Conference Room  
(79-7381 Mamalahoa Highway, Kealahou, HI 96750)

**Registration is required.** This class is limited to 30 participants.  
Register at [www.hawaiicoffeeed.com/lfa](http://www.hawaiicoffeeed.com/lfa) or contact Matt at 808-322-0164 by Feb. 24.



Little Fire Ants (*Wasmannia auropunctata*) or LFA, are vicious little ants with a sting that can leave you in pain. They can be found in the home, in nearly any crack or crevice, or on the farm, in trees where they have been known to “rain down” on people causing serious welts and long lasting discomfort. If not controlled, LFA can become a major agricultural pest. They can infest fields, where they can damage crops and sting workers.

UH CTahr and the Hawaii Ant Lab (HAL) welcome you to their informational and interactive workshop on Little Fire Ants. During this hands-on workshop, Kiyoshi Adachi of HAL will teach participants about LFA management basics. He will guide participants in surveying for LFA and demonstrate mixing of bait for treatment in orchard crop situations. UH Extension faculty and staff will be assisting with this event.

Participants will be given a free LFA sampling kit.

If you suspect LFA on your farm, please bring in a FROZEN/DEAD sample. Be sure to collect the ants in a jar or plastic container with a tight lid, freeze the ants for at least 2 days, and provide your name, collection location, and contact information with your sample.

# Are you a cacao farmer or want to be one?



Join us at the

**2020 Hawaii Chocolate & Cacao Association Conference**  
March 27-29th, Hilo



This year's event is jam-packed with cacao farm tours, workshops, dynamic speakers, demonstrations and of course lots of CHOCOLATE!

## All New This Year:

### **CACAO 101**

Throw in a **FREE CACAO 101**- a full day event on Friday the 27th for new farmers or folks that want a refresher course on "best practices" from farm design to growing, harvesting, fermentation and drying. This event is **Free** for anyone attending the conference and only \$50.00 for those not attending the conference. If anyone want us to provide lunch add \$10.00. *If you are a new farmer coming from Kauai contact us for discounts on the event and travel reimbursements.*



The HCCA conference events and activities are open to all HCCA members and also to anyone who is interested in learning more about growing cacao or making chocolate in Hawaii, the industry, the supply chain or who just loves chocolate!

**The fee for the 3 day event is \$200 per person. For the full itinerary of all the conference events, speakers and activites please check out the HCCA website:**  
[www.hawaiichocolate.org](http://www.hawaiichocolate.org)

## County of Hawaii 2020 Census Kickoff Events

Shape  
your future  
START HERE >

United States®  
Census  
2020



# COUNTY OF HAWAI'I 2020 CENSUS KICK-OFF EVENTS

The public is invited to learn about Census 2020 at this FREE event hosted by the County of Hawai'i Department of Research and Development.

Doors open at 9:00am. The program begins at 9:30am with a County Proclamation followed by a presentation by Hawai'i Island's Census Representative. A question and answer period will round out the meeting, which ends at Noon.

Census results have an impact on planning and funding for health clinics and highways, fire departments and disaster response, education programs such as Head Start and college tuition assistance, and so much more. The 2020 Census is more than a population count. It's an opportunity to shape the future of your community.

*This event is accessible to persons with disabilities. If you require an accommodation or auxiliary aid and/or services to participate in this meeting (i.e., sign language, interpreter, large print), please contact Jane Horike, Economic Development Specialist in the Department of Research and Development as soon as possible or at least five (5) working days prior to the meeting date of **February 25, 2020**.*

Telephone: (808) 961-8496 | Email Address: [Jane.Horike@hawaiicounty.gov](mailto:Jane.Horike@hawaiicounty.gov)



Join us in the  
following locations:  
9:00am – 12:00pm

### February 25, 2020

Pāhoa Community Center  
15-3022 Kauhale Street,  
Pāhoa, HI 96778

Register:

<https://www.eventbrite.com/e/hawaii-county-census-2020-kick-off-in-pahoa-tickets-92126820801>

### February 26, 2020

Pahala Community Center  
96-1149 Kamani Street,  
Pahala, HI 96777

Register:

<https://www.eventbrite.com/e/hawaii-county-census-2020-kick-off-in-pahala-tickets-92132463679>

### February 27, 2020

Aupuni Center Conference  
Room  
101 Pauahi Street, Suite 1,  
Hilo, HI 96720

Register:

<https://www.eventbrite.com/e/hawaii-county-census-2020-kick-off-in-hilo-tickets-92134535877>

### March 6, 2020

West Hawai'i Civic Center  
Community Meeting Hale  
75-5751 Kuakini Highway,  
Building G, Kailua-Kona, HI  
96740

Register:

<https://www.eventbrite.com/e/hawaii-county-census-2020-kick-off-in-kailua-kona-tickets-92139061413>

## Hawaii County FSA Update

Hawaii County Producers May be Eligible for Emergency Conservation Program Assistance

Flash flooding has caused severe damage in the Pahala and Windward areas of the County.

Farms and ranches suffering severe damage may be eligible for assistance under the Emergency Conservation Program (ECP) administered by the Hawaii County Farm Service Agency (FSA) For land to be eligible, the natural disaster must create new conservation problems that, if untreated, would:

- be so costly to rehabilitate that Federal assistance is or will be needed to return the land to productive agricultural use
- is unusual and is not the type that would recur frequently in the same area
- affect the productive capacity of the farmland
- impair or endanger the land

A producer qualifying for ECP assistance may receive cost-share levels not to exceed 75 percent of the eligible cost of restoration measures. Eligible socially disadvantaged and beginning farmers and ranchers can receive up to 90 percent of the eligible cost of restoration. No producer is eligible for more than \$500,000 cost sharing per natural disaster occurrence. The following types of measures may be eligible:

- removing debris from farmland
- grading, shaping, or releveling severely damaged farmland
- restoring permanent fences
- restoring conservation structures and other similar installations

Producers who have suffered a loss from a natural disaster may contact the local FSA County Office and request assistance today through March 13, 2020.

To be eligible for assistance, practices must not be started until all of the following are met:

- an application for cost-share assistance has been filed
- the local FSA County Committee (COC) or its representative has conducted an onsite inspection of the damaged area
- the Agency responsible for technical assistance, such as the Natural Resource Conservation Service (NRCS), has made a needs determination, which may include cubic yards of earthmoving, etc., required for rehabilitation

For more information about ECP, please contact the Hawaii County FSA Office at 808-933-8381 or visit [www.fsa.usda.gov/hi](http://www.fsa.usda.gov/hi)

---

## Moonlight 'Disrupts' Coffee's Circadian Clock - C&CI Newsletter - Issue 212

A study by CIRAD has shown for the first time that despite its very low intensity, moonlight affects coffee trees on a molecular level, and disrupts their circadian clock. The French research organization said it believes it could be in the interests of the horticultural and related sectors to control the effect on crops of this type of light. The results of the study\* were published in the journal *BMC Plant Biology*.

Read the rest of the article at <http://bit.ly/39zCxOh>

To view the full newsletter visit <http://bit.ly/2SJsGi5>

---

## **O'ahu RC&D February News and Updates**

- ◇ **Recap: You Grow Girl! Celebrating Hawai'i Women in Agriculture**
  - It was a night to remember on the farm! Nearly 100 women farmers, ag professionals and supporters came out for a farm-to-table experience at Kōhana Rum Distillery in Kunia. Keynote speaker Lisa Kivirist - who came all the way from Wisconsin to join the event - enthralled attendees with inspiring stories from her book "Soil Sisters". At experience stations, guests enjoyed tastes while learning about keys for business growth in agritourism from Tamara Butterbaugh of Mānoa Chocolate and other leaders. Mahalo to everyone who made this event possible. Stay tuned as we prepare to kick off this spring's series of AgHERculture workshops focused on agritourism.
  
- ◇ **O'ahu RC&D talks Soil Health at the 1st Annual CTAHR Day**
  - The University of Hawai'i at Mānoa hosted the first annual CTAHR day to showcase research, outreach, and extension of the College of Tropical Agriculture and Human Resources. O'ahu RC&D's conservation specialist, a CTAHR alumna, shared with students from all levels the importance of soil health, common ways it can become at risk, and management strategies. In a soil management demonstration, soil with green growth was a great example of how to both reduce soil erosion and increase water infiltration, when compared to bare soil.
  
- ◇ **2020 Ag Day at the Capitol**
  - For all things agriculture, Ag Day at the Capitol is the place to be! O'ahu RC&D joined more than 60 other exhibitors last Wednesday to share the world of agriculture here in Hawai'i with the public and network with other professionals and legislators. Mahalo to our friends at the Hawai'i Farm Bureau for hosting and to our many partners for their vision of a thriving, diverse agricultural sector.
  
- ◇ **Women Farmer Feature: Noe Neumann**
  - Through the development of the Hawai'i Women Farmers Network, O'ahu Resource Conservation & Development Council (O'ahu RC&D) has brought amazing women together across the State of Hawai'i. With the creation of the first cohort in 2019, we got to meet Noe Neumann of Lokoea Farms. She was selected to attend the National Farmers Union Women's Conference in San Diego with fellow scholarship recipients. Noe continues to develop a network of women farmers in her community by sharing her expertise; she shares and teaches others the skill of fruit tree grafting through lessons learned improving her own orchard.
  - Read the entire story at <http://bit.ly/2HMXKbX>
  
- ◇ **Community Events**
  - **Tropical fruit tree planting work days and grafting working**  
Presented by Hawai'i Tropical Fruit Growers and collaborators  
February 18–20 – Register at <http://bit.ly/2SG6aXu>
  - **USDA AgDiscovery 2020** - <http://bit.ly/31SseT0>

- **Pacific Islands Area Announces Farm Bill Program Application Deadline:**  
February 21, 2020, 4:30 p.m. Hawaii Standard Time – contact your local NRCS office for more information
  - **American Association of University Women Honolulu Branch: Career and Leadership Development Grant opportunity with Hawai'i Women Farmer's Network -**  
**<http://bit.ly/38uf000>**
- Tropical fruit tree planting work days and grafting - **<http://bit.ly/2SG6aXu>**
  - USDA AgDiscovery 2020 - **<http://bit.ly/31SseT0>**
  - Pacific Islands Area Announces Farm Bill Program Application Deadline: February 21, 2020, 4:30 pm Hawaii Standard Time - **<http://bit.ly/38ukLMo>**
  - American Association of University Women Honolulu Branch: Career and Leadership Development Grant opportunity with Hawai'i Women Farmer's Network - **<http://bit.ly/38uf000>**
- 

#### **Update from Oahu Cooperative Extension**

The City and County of Honolulu has begun a community engagement process to review options for establishing a storm water utility fee for Oahu. The City's Department of Facility Maintenance Storm Water Quality Branch is overseeing this process.

For more information visit **<https://www.stormwaterutilityoahu.org/>**

**FMC & Bayer Workshop** - FMC Exirel and Bayer Velum One:  
Registered Products for Insect and Nematode Management

- Thursday, March 26, 2020
- 7:30 am - 11:30 am
- Pearl City Urban Garden Center Classroom
- 955 Kamehameha Hwy, Pearl City, HI 96782
- 3 HDOA Pesticide Applicator CEUs
- Seats limited to the first 35 registrants
- Register at **<http://bit.ly/2HoGZmX>** or contact Gilbert at (808)682-5113 or [gilbert.araki@simplot.com](mailto:gilbert.araki@simplot.com)

#### **Ginger Workshop**

- Thursday, March 12, 2020
- 4:30 pm – 5:30 pm
- Pearl City Urban Garden Center
- For more information or to register - **<http://bit.ly/2HqaGnH>**

#### **Produce Safety Rule PSA Grower Training**

- Friday, March 13, 2020
- 9:00 am – 5:00 pm



- Pearl City Urban Garden Center
  - For more information or to register - <http://bit.ly/2waXUqL>
-