

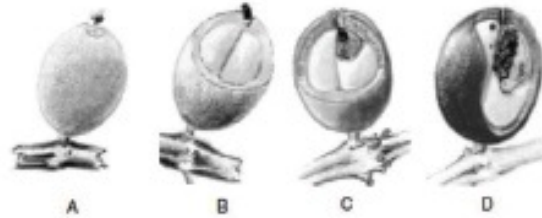
## May 2016 – Events and Announcements

Dear Growers and Friends,

The recent showers have been long over-due for our crops.

**Coffee:** If you haven't done your end-of-season strip pick, please be sure to remove all old cherry and raisins from the tree and destroy CBB in them. This will help to reduce this season's colonizers by removing CBB breeding sites.

*Figure 1: CBB positioning on coffee cherry and in the bean. (A/B = no bean damage; C/D = bean damage).*



The CBB research and economics teams are showing that the lower (closest to zero) you can keep your bean damage or C/D (fig 1) rate at the START of the season, the more likely you are to 1) have less CBB-damaged bean at the end of the season, 2) increase your bottom line (\$), and 3) meet or exceed Hawaii grading standards.

If you have **young, green cherry** on your trees, sample your entire farm using the **30 trees method** (12 trees required by SHAC). If you have a high % of CBB in the A/B position, spray to kill these CBB before they damage the bean. Remember that once CBB are in the C/D position, they will begin laying eggs. These new progeny (eggs and young) are highly protected inside the cherry and bean. Spraying will not kill them. These young will develop into adult beetles, exit the coffee, and infest neighboring cherry and beans. Once CBB are in the C/D position, the only way to kill them is to remove the cherry from the tree and process or destroy the coffee. An early season strip pick may be necessary to remove larger, green and ripening cherry from the field especially if CBB are found in the C/D position within these cherry.

**The most recent CBB IPM Recommendation document can be downloaded at <http://www.ctahr.hawaii.edu/oc/freepubs/pdf/IP-33.pdf>.**

As a reminder, please do not spray with PBO-based (piperonyl butoxide) products such as Pyronyl and Evergreen, especially if you or your processor sell unroasted coffee to Japan. Maximum residue level tolerances for PBO have not yet been established for coffee. As such, coffee sprayed with PBO-based products risk rejection (\$ losses for the grower/processor) upon arrival in Japan. This product is not meant to be used all season as there is potential for resistance build-up. **Commercial *Beauveria bassiana* products are still recommended for use throughout the coffee season, by UH CTAHR and researchers, to control CBB. Strip picking and spraying should be used along with the other major integrated pest management guidelines recognized in the CBB IPM document above.**

Read more about CBB control at <http://hawaiicoffee.weebly.com/cbb-management.html>.

Be aware of ***Cercospora leaf spot and berry blotch of coffee*** with constant rain. Treat early and as needed for control. Additional information about this disease can be found at <http://www.ctahr.hawaii.edu/oc/freepubs/pdf/PD-41.pdf>.

Fertilize your coffee trees now that the rains have returned. Irrigation and rain will help to move fertilizers to the root system and throughout the plant. Foliar fertilizers can also be used to boost plant health and nutrient status, particularly with minor/micro nutrients, but should not be used exclusively to fertilize trees. The CTAHR publication, "**Growing Coffee in Hawaii**" provides general fertilization recommendations based on the calendar year and cherry (lbs) harvested per acre. Download this publication at <http://www.ctahr.hawaii.edu/oc/freepubs/pdf/coffee08.pdf>.

Submit your soil AND leaf samples to your nearest UH CTAHR Extension Office. Ask for a **S2**-pH, P, K, Ca, & Mg, **T1**-Nitrogen and **T2**-All. Click [here](#) for directions on taking both samples correctly. Leaf and soil samples (done simultaneously) can help to take the guess work out of fertilizing your trees, particularly with good record keeping of fertilizer type, timing, and rates. <http://tinyurl.com/zjrp3s5>. Join us on Tuesday, May 24, 2016 at the Kona Research Station for hands-on demonstrations of leaf and soil sampling. A flyer and registration info will follow shortly.

**Spring showers brings May flowers and...BUGS:** Please walk around your farm and survey for new and emerging disease and pest infestations (e.g. mites, aphids, scales, fruit fly, ant, mealybugs, etc.) that may be attracted to new plant growth (shoots, leaves, flowers, young fruit). Prevention, early detection and treatment are critical for deterring internal and external fruit damage, yield, fruit marketability and post-harvest quality, and overall tree health and vigor. The May 24 event will also teach participants how to conduct field sampling and submissions for pest and disease ID. You'll be able to bring in your own sample for ID that day.

**UH New Hires:** Thank you for your patience with my time commitments to the university system. We have been actively hiring new Jr. and Assistant Extension Agents for the Big Island and throughout the state. Additionally, we are currently hiring a new Hawaii County Administrator. One of our new Big Island hires (March 2016) is Marisol Quintanilla-Tornel. She has been hired as a Jr. Extension Agent with a focus on **Sustainable Agriculture and Organic Farming** and is located in Hilo at the Komohana Agriculture Research & Extension Center. Please find additional information about Marisol at <http://www.ctahr.hawaii.edu/site/Bio.aspx?ID=QUINTMAR>. You may contact her at 808-969-8261 or [marisolq@hawaii.edu](mailto:marisolq@hawaii.edu).

**I will be away from the office from May 27 to June 10. Gina (Kona office assistant) will also be away from May 23 to June 10.** If you have farm questions, please contact Kathy Aoki, who is located at the **Komohana Research Extension Center in Hilo**, at (808) 969-8201 or [kathyo@hawaii.edu](mailto:kathyo@hawaii.edu). She can help to direct your inquiries to other agents in similar horticultural fields. If you have an emergency, please contact JB Friday, interim Hawaii County Administrator, at 808-969-8254 or [jbfriday@hawaii.edu](mailto:jbfriday@hawaii.edu). I apologize for any inconvenience this may cause.

**May Fruit Tree Publications – Lychee:** In Hawaii, lychee bloom in the winter and are harvested in the late spring to early summer. Learn about "Growing Lychee in Hawaii" [here](#) or at [http://www.ctahr.hawaii.edu/oc/freepubs/pdf/F\\_N-2.pdf](http://www.ctahr.hawaii.edu/oc/freepubs/pdf/F_N-2.pdf). This publication provides an overview of lychee culture and has practical illustrations of air-layering and grafting.

Much of the commercially available fruit are of the cultivar 'Kaimana'. Learn more about 'Kaimana', an improved new lychee cultivar for Hawaii" [here](#) or at <http://www.ctahr.hawaii.edu/oc/freepubs/pdf/CFS-LYCH-3B.pdf>.

A more recent publication looks at "Lychee Fruit Bagging for Commercial and Home Growers" as a method of increasing marketable yield and farm revenue. This publication can be found [here](#) or at <http://www.ctahr.hawaii.edu/oc/freepubs/pdf/F&N-14.pdf>.

---

**UH CTAHR Cooperative Extension Offices will be closed on Monday, May 30<sup>th</sup>, in observance of Memorial Day.**

---

Visit <http://hawaiicoffee.weebly.com/events-and-announcements.html> for additional information on the following events, announcements and more.

---

**Volunteer Work Day at Amy Greenwell Garden**

Saturday, May 7, 9:00-12:30. Amy Greenwell Garden Nursery and Old Office area.

We will start out at the old office/nursery area again this Saturday, so drive up the old driveway off Mamalahoa Hwy near mile marker 110. I'd like to groom some areas in the dry forest section of the Garden, and clean up around some banana trees. All this work is paying off and it's easier to keep the Garden clean and healthy going into the rainy season.

We still have lots of wauke pulapula. This is a good time to plant (assuming it keeps raining). You can take wauke home with you on Saturday.

Drive up the old driveway just south of mile-marker 110 on Mamalahoa Hwy and you can park close to the work area. We will provide gloves, tools, cold water, and energy bars. Contact: Peter Van Dyke; [pvandyke@bishopmuseum.org](mailto:pvandyke@bishopmuseum.org)

---

### **HDOA - Top 10 fresh commodities imported into Hawaii - January 2016**

HDOA Research Statisticians compiled this data by tracking and analyzing imported commodities from air freight and cargo shipping manifests. To see the top 10 list, view the flyer at <http://tinyurl.com/hyegkvq>

Some notes – Oranges includes tangerines, Peppers includes Bell (all colors and sizes) and Hot (Anaheim, habanero, jalapeno, poblano, serrano, etc.) and Tomatoes includes all varieties.

---

### **Coffee & Cocoa International - Newsletter - Issue 20**

For the newsletter, go to <http://tinyurl.com/h7bmnlo>. This issue includes the following topics:

1. Coffee Consumption Could Protect Against Fatty Liver Disease
2. Nestlé South Africa Inaugurates Soluble Coffee
3. NCA Claims to Set Record Straight on Diacetyl
4. Cocoa Prices Rising Again
5. May 2016, Inside Coffee & Cocoa International (C&CI) out now.

---

### **Western Extension Committee - Ag In Uncertain Times - Webinars**

**Ag In Uncertain Times** is developed and managed by the Western Extension Committee, which is an organization of Extension Economists from the 13 western states, Guam and other Pacific Islands supported by Cooperative Extension Service Directors in the western region.

It is designed to provide current information to farmers, ranchers and educators about the challenges in today's agricultural economy. Included are: Live webinars, open to the public, and access to recordings of previous webinars (<http://tinyurl.com/hhzzjr9>)

Check out their latest recorded webinar on Regulatory Environment at <http://tinyurl.com/gwupbwb>

Presentations and presenters included:

**Outlook for U.S. Cattle Producers in 2016** - Jess Peterson, Executive Vice President of the U.S. Cattlemen's Association

**The Food Safety Modernization Act: An Update** - Marisa Bunning, Associate Professor and Extension Specialist, Food Safety, Colorado State University and Director, Western Regional Food Safety Training Center/Mountain States Sub-Region

**The 2014 Farm Bill: A Midterm Review** - Vince Smith, Montana State University

---

## Submit your Comments! Paraquat--Proposed Risk Mitigation Measures

Use and Application of Paraquat: Please see Cathy Tarutani's email below about the proposed risk mitigation measures regarding the use of Paraquat. Deadline for comments: May 9th, 2016.

----

Greetings All,

Comments on this are due on May 9. If you would like me to include your comments in our submission, please send them to me by Wednesday, April 27.

Summary: EPA has concluded that mitigation measures are necessary to minimize human health incidents associated with paraquat dichloride. Among these measures, EPA has proposed:

- Prohibition of application from hand-held equipment. The EPA is proposing to prohibit the use of all handheld application equipment, including backpack sprayers and hand gun sprayers, for paraquat dichloride.
- A closed-system requirement (similar to the lock-and-load system) for transferring paraquat out of all containers.
- Restricting the use of paraquat to certified applicators only (i.e., prohibiting application by individuals working under the supervision of a certified applicator).
- Targeted stewardship/training materials for paraquat users. All applicators handling paraquat dichloride should take training (to be developed by the technical registrants), which will be available online, and retain documentation of successful completion. EPA's intention is for the training website to be listed on all paraquat dichloride product labels and successful completion to be a condition of use.

Here is link to a document which contains the details about the Proposed Interim Mitigation Measures:

<http://tinyurl.com/z5twdn5>. (The original document is available at <http://tinyurl.com/gqsltu7>).

In this document, I have highlighted the individual risk mitigation measures and the associated guidance for commenters. Please read the whole document, especially section "3. Proposed Interim Mitigation Decision" (pages 14-21) for other information which may be important to you or your stakeholders.

EPA welcomes all comments regarding any and all of the risk mitigation measures. However, they are particularly interested in specific items ("Guidance for Commenters") for each mitigation measure. Please provide information to address any of the specific items under "Guidance for Commenters" if you can.

More information is available in the docket at Regulations.gov: <http://tinyurl.com/jcrsfr>

Note: the comment deadline for these risk mitigation measures is May 9, NOT May 19.

You and any of your stakeholders are welcome to respond to the docket directly. To submit comments directly, go to the docket and click on the "Comment Now!" button. (Use the button to the immediate right of "Proposed Interim Mitigation Decision: Paraquat Dichloride." These comments are due on May 09, 2016.) If you or any of your stakeholders submit comments directly, I would appreciate a copy or notification that comments were submitted.

If you prefer, you may send your comments to me; your information will be included in our submission. I will accept comments from stakeholders, as well. Please send comments to me by Wednesday, April 27. If you have any questions or concerns, please contact me.

Mahalo,

Cathy Tarutani

Extension Pesticide Programs

Plant & Environmental Protection Sciences

University of Hawaii

voice: 808-956-2004  
cathy@hpirs.stjohn.hawaii.edu

---

### Updates from SHAC CBB Grant

**Changes are coming to the Beauveria pickup protocol.** In a few weeks we will be transitioning to BEI in Kona and Hilo. We will update you when this happens.

**Luis A. is now a Hawaii Resident!** Many of you already know Luis. An entomologist who grew up in coffee, he brought us the 30 Tree method in 2012, came back in 2015 to work with farmers and forever changed the way we look at CBB on our farms. SHAC is very happy to announce that we have convinced him to move to Hawaii to assist our growers in battling CBB. His role with SHAC is to expand our field education and do focused outreach with farmers who feel the IPM may not be effective on their farms. Give him a warm aloha welcome at [luis@deadcbb.com](mailto:luis@deadcbb.com)

**Research Volunteers Needed** In addition to assisting us all regionally, Luis will be closely evaluating CBB behavior on a small group of farms. He is looking for growers who are interested in a more intense look at CBB on their farms. Email us at [info@deadcbb.com](mailto:info@deadcbb.com) for more information.

-SHAC

---

### Pesticide Risk Reduction Education Short Course - Kona

Tuesday and Wednesday, May 24-25, 2016  
8:15 am - 3:45 pm  
Kailua Kona, HI 96740

Registration deadline: May 17, 2016  
Registration fee: \$100 per person  
Parking fee at hotel: \$3 per day with validation  
Study packet fee: \$35 (if you need one)

This course would benefit people who want to be better informed about handling pesticides properly or prepare for the Hawaii Department of Agriculture's certification exam for restricted use pesticides. (Certified applicators will not earn recertification credits by attending this course.)

For more information, view the flyer at <http://tinyurl.com/hbskbbr>  
Questions: contact Charles Nagamine at 808-956-6007 or visit, <http://pestworld.stjohn.hawaii.edu/pat/schedule.html>

---

### HDOA News Release

4/12/16 Here is a news release on the capture of an illegal lizard in Waianae:  
<http://hdoa.hawaii.gov/blog/main/nrbdragon/>

---

### Want to Know What UH CTAHR is Doing These Days?

Check out CTAHR Notes and find out who is doing what at CTAHR. For current and archived issues, go to <http://tinyurl.com/zdm5q36>

---

## Western United States Agricultural Trade Association - News Release

WUSATA Leads High-Profile Mission to Vietnam, April 4-8, 2016 with Western State Directors of Agriculture

Hawaii Board of Agriculture Chairperson Scott Enright is among those ag leaders currently on this trade mission to facilitate more export trade to Vietnam. Enright is also the treasurer on the Board of Directors of WUSATA. For news release, go to <http://tinyurl.com/hrlfsd4>

---

## HDOA Confirms Bagrada Bug on Oahu

In March 2016, HDOA has detected bagrada bug on Oahu. For information on bagrada bug, view the updated New Pest Advisory at <http://tinyurl.com/h9fqddx>

Please check fields and keep an eye out for the characteristics outlined in the publication. If you suspect an infestation of bagrada bug, please call:

Hawaii Island: 974-4146 (Hilo); 323-7579 (Kona)

Kauai: 241-7132

Maui: 873-3949

Oahu: 973-9525

Or Email: [hdoa.ppc@hawaii.gov](mailto:hdoa.ppc@hawaii.gov)

---

## USDA APHIS - Comments Open on Proposed Rule to Amend Import Requirements for Fresh Cherimoya Fruit and Lemons from Chile into the United States

USDA APHIS is seeking comments on two proposed rules to amend the import requirements on **fresh cherimoya fruit from Chile into the US** and **fresh Lemon fruit from Chile into the continental US**. The proposed rules will be available for review and comment beginning on or about April 4 and the comment period will be open for 60 days after publication (June 3).

For more information on the proposed rule on cherimoya, go to <http://tinyurl.com/z5vx8he>.

For more information on the proposed rule on lemons, go to <http://tinyurl.com/j8gp9b5>.

---

## Farmers Urged to Participate in Cover Crop Survey

A nationwide survey of farmers on cover crop use is seeking insight from growers around the country — whether or not you plant cover crops now, used to plant them or never tried...Visit [sare.org/covercropsurvey](http://sare.org/covercropsurvey) for more information.

To take the online survey, go to <http://tinyurl.com/ccsurvey2016>.