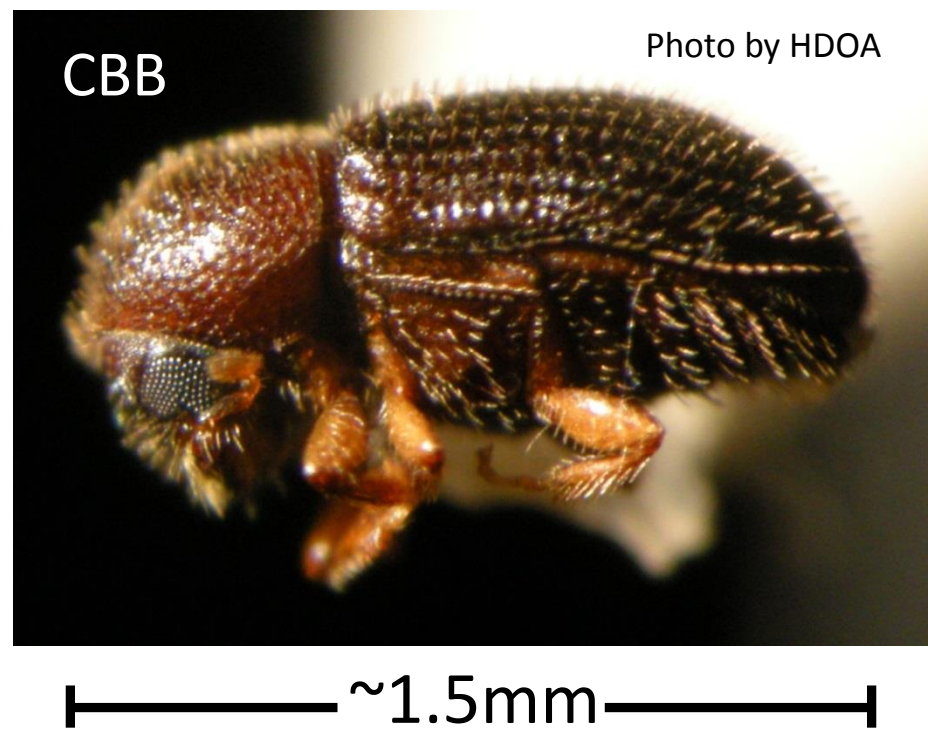






YOU Can Help Stop the Spread of CBB!

Andrea Kawabata
UH CTAHR Kona Cooperative Extension Service, andreak@hawaii.edu



-  Do not remove coffee berries from any farms or wild trees.
-  With the exception of roasted coffee, it is prohibited to take untreated coffee berries and green beans, or uninspected coffee plants, plant parts, used picking supplies, equipment, etc. to other islands from the Big Island and Oahu (Maui pending). Contact the Hawaii Department of Agriculture's Plant Quarantine Department for all quarantine rules, regulations and for inspection.
-  Inspect and clean your clothing, footwear, pockets, cuffs, hats, etc. for hitchhiking CBB when leaving coffee areas on the Big Island, Oahu or Maui.
-  If possible, change into clean attire before traveling to other islands from the Big Island, Oahu or Maui, especially if you have visited a coffee farm while there. Bag your used clothing, shoes and accessories and wash them immediately upon your arrival.



If you suspect CBB on other islands, please contact the UH CTAHR Cooperative Extension at (808) 322-4892.

HDOA Plant Quarantine
Kona – (808) 322-1007
Hilo – (808) 974-4141

