

STOP THE SPREAD COFFEE LEAF RUST

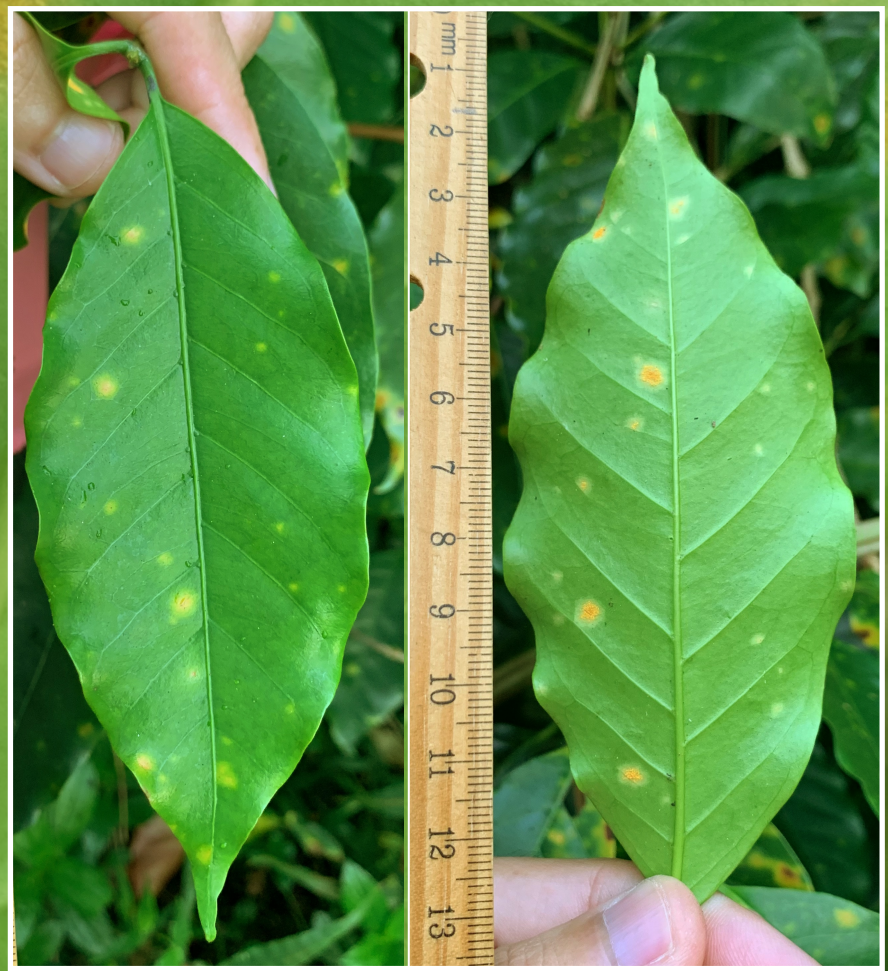
A New Coffee Disease in Hawaii

Coffee leaf rust (CLR) has been found on Hawaii Island, Maui and Lanai. This disease spreads easily and can devastate coffee trees and production if not managed properly.

IF SUSPECTED, DO NOT TOUCH OR MOVE PLANTS.

Look at the bottom third of coffee trees for:

- Irregular shaped, pale yellow to yellow-orange spots on the topside of leaves, and
- Yellow to orange powdery spots on the underside of leaves.



CLR on farms?

Call (808) 322-4892, text (415) 604-1511 or email photos and location details to andreak@hawaii.edu; Info at www.HawaiiCoffeeEd.com/CLR



CLR in a public area or residence?

Call HDOA at (808) 973-9525 or email photos and location details to HDOA.PPC@hawaii.gov with Subject: Suspect CLR



STOP THE SPREAD COFFEE LEAF RUST A NEW COFFEE DISEASE IN HAWAII

Before entering and when exiting a coffee farm, and prior to traveling interisland:



Change into clean clothing and footwear.



Wash materials with detergent and hot water and dry on high heat.



Sanitize tools, materials, supplies, etc. used on the farm.



Use $\geq 70\%$ alcohol or a fresh solution of 10% bleach to sanitize with. If bleach is used, rinse or oil metal to prevent corrosion.



Wash or powerwash vehicles and field equipment with soap and water over gravel and away from coffee trees.

While in the farm:



Avoid touching coffee trees even if leaves do not display coffee leaf rust symptoms.



Avoid moving infected and potentially infected coffee materials throughout the farm and from farm to farm.

CLR on farms?

Call (808) 322-4892, text (415) 604-1511 or email photos and location details to andreak@hawaii.edu; Info at www.HawaiiCoffeeEd.com/CLR



CLR in a public area or residence?

Call HDOA at (808) 973-9525 or email photos and location details to HDOA.PPC@hawaii.gov with Subject: Suspect CLR

