

Kona Cooperative Extension – Events and Announcements Newsletter

Volume 2-2, February 2021

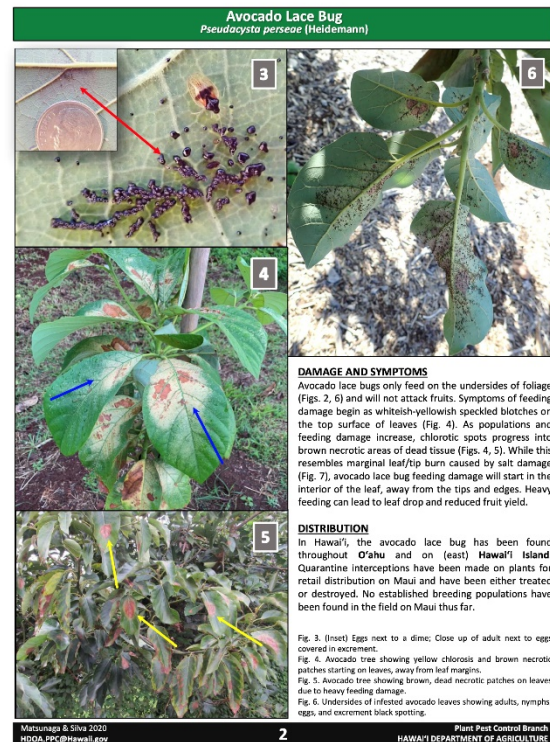
Dear Growers and Friends,

Avocado Lace Bug (ALB):

Recent inquiries about Avocado Lace Bug (*Pseudacysta perseae*) have increased, indicating wider spread of this insect pest from East to West Hawaii. Signs and symptoms of this pest include:

-
- What looks like sunburn or leaf burning, browning (tissue death, necrosis) and chlorosis on the upper avocado leaf surface,
- Black spotting or what looks of tiny tar-like drops from ALB excrement (may be covering eggs) on the underside of the leaf surface,
- Leaf burning and browning may show up on the lower leaf surface as well with advanced infestation.
- All life stages (egg to adult) of ALB may be found on the underside of the leaves.

Please be on the lookout and avoid moving infested plant materials to slow the spread. See the HDOA new pest advisory (<https://bit.ly/2MhJv4w>) and CTAHR publication (<https://bit.ly/3bAUcYr>) for additional ALB information. CTAHR faculty are currently conducting trials on Oahu for the control of this pest. We hope to have some information available to growers soon.



Coffee Berry Borer (CBB) and Coffee Leaf Rust (CLR) Management:

1. **Strip-picking for CBB control** - End-of-season strip picking (<https://bit.ly/3bxh6jI>) should be completed or near completion. If you had early fruiting, have not yet sprayed with *Beauveria* (<http://bit.ly/2MilQku>) or another approved pesticide, and these berries are infested by CBB, consider conducting an early-season strip pick to remove and destroy these berries and reduce your CBB population. If left, these berries serve as a source of CBB that will infect your main crop.
2. **Monitor for CBB and CLR** - Monitor for CBB (<http://bit.ly/3aNCIhP>) on young berries (1/4" and larger) and spray as necessary to control CBB. **Starting the season with as low a CBB infestation as possible will help you keep bean damage levels to a minimum with the recommended management practices.** CBB traps should be removed from the farm when young berries develop. Monitor for CLR (<http://bit.ly/3bx9nSB>) as often as possible to detect CLR at an incidence level under 5%. Currently approved contact fungicides will not effectively control live CLR within the leaves. For ID, potential CLR photos and farm information can be emailed to me at andreak@hawaii.edu or texted to 415-604-1511 as first options, or double bagged and

brought to the Kona Extension Office at 79-7381 Mamalahoa Highway, Kealahou (across of Aloha Theater). Please follow sanitation protocols (<http://bit.ly/3bvXRa9>) before entering and when exiting farms. Stop the Spread CLR posters are available in:

- English - <http://bit.ly/3bCN9Pj>
 - Spanish - <http://bit.ly/3dCztGB>
 - Ilocano - <http://bit.ly/3sn5Zkc>
 - Tagalog - <http://bit.ly/3kgcMck>
3. **Pruning for CBB and CLR management** - Pruning for the management of CBB and CLR (<http://bit.ly/2P1UVud>) should be completed or near completion. The main reasons for pruning are to generate new vegetative growth, increase light and airflow through the canopy, manipulate shade, and stabilize or increase yield with the removal of excessive and non-productive vertical and lateral branches. Pruning and desuckering can also facilitate other cultural practices, such as spraying, harvesting, weed control, and fertilization. If you have CLR or are spraying prophylactically, spray the coffee orchard with an approved fungicide(s) (<http://bit.ly/3ulqBep>) to kill CLR spores and reduce further spread prior to pruning. Strip pick before pruning and process or destroy this coffee. Do not leave green, ripe, over-ripe berries or raisins in the field. The spray publication is available in:
- Spanish - <http://bit.ly/3dEAXA7>
 - Ilocano - <http://bit.ly/2MIVbmY>
 - Tagalog - <http://bit.ly/3aOfMtG>
4. **Maintaining tree health** - Soil and leaf tissue samples help to determine soil and plant nutrient levels as well as soil pH. These and other samples (<https://bit.ly/2P1VbcF>) may be submitted to any CTAHR Extension Office. Follow these instructions (<https://bit.ly/3dHDWrs>) for coffee soil and leaf tissue sampling. All coffee samples must be double bagged prior to submission. Granular, prilled and pelleted fertilizers require adequate moisture (rainfall, irrigation, etc.) for nutrients to be released and made available to the tree's root system. The timing, type, rate, and method of fertilizer application(s) is important for maintaining tree, soil and environmental health, as well as avoiding fertilizer accumulation and toxicities, and addressing deficiencies and other problems.
5. **Spraying to manage CBB and CLR** - Monitor and spray for CBB early in the coffee season for best control. Monitor for CLR often and spray as necessary while abiding by label directions to control CLR at an incidence level less than 5%. With greater severity, leaf removal, pruning, and spraying may be necessary to reduce the CLR incidence level to under 5%. Some CLR fungicide products can be tank mixed with *Beauveria*, but others like OxiDate 2.0 should not be tank mixed. Watch recorded presentations (<http://bit.ly/2ZLQmWY>), visit the CBB control webpage (<http://bit.ly/3slMs3A>), and read through the CLR spray publication (<http://bit.ly/3uolSnj>) for pesticide and spraying details. Do not use any pesticide not approved for use on coffee in Hawaii. Read and follow all label instructions before handling, mixing, applying and storing *Beauveria* or any other pesticide or surfactant. The label is the law!

Please don't hesitate to contact me if you have any questions or need assistance with pesticide rates and calculations.

-Andrea

Email: andreak@hawaii.edu

Text: 415-604-1511
Call: 808-322-4892

Mention of a trademark or proprietary name does not constitute an endorsement, guarantee, or warranty by the University of Hawaii Cooperative Extension Service, United States Department of Agriculture, Hawaii State Department of Agriculture, or its employees and does not imply recommendations to the exclusion of other suitable products.

Visit <https://www.hawaiicoffeeed.com/events-and-announcements> for additional information on the following events, announcements and more.

COVID Vaccination Survey Form for Phase 1b Including Agricultural Employers, Businesses, and Organizations in Food Production

Organizations with frontline essential workers in Phase 1b may complete this survey to identify their eligible workers and coordinate vaccinations. **Please do not complete the survey multiple times.**

Farms interested in getting on the Hawaii Department of Health's radar to coordinate and schedule vaccinations and providing a point of contact are encouraged to complete the survey form below.

- <http://bit.ly/3uBPoLo>

Additional info can be found at the State of Hawaii COVID resource webpage: <http://hawaiicovid19.com/>

Examples from the CDC of who is considered an essential worker in Phase 1b (<http://bit.ly/3aRZ5gZ>)

Your Testimony Needed - SB 855

Senate Bill 855 has been scheduled for hearing before the Senate Agriculture and Environment Committee for Monday, February 8 at 1:00 pm. **The bill will extend the HDOA pesticide subsidy program to combat CBB through July 1, 2023, and authorize subsidies to combat coffee leaf rust.** An important positive feature of SB 855 is that it would combine the CBB and CLR subsidies under a single program with a single administrator.

Because of coronavirus, for the first-time neighbor island residents are able to testify via Zoom -- without the need to travel by air to Honolulu to give live testimony. All KCFA members are encouraged to submit both written and live Zoom testimony in support of SB 855.

Submission of written testimony and a request to give live Zoom testimony **must be submitted through the Legislature's website by 1:00 pm on the day before the hearing -- Sunday, February 7.**

The procedures outlined by the Legislature for:

Submitting written testimony is found here - <http://bit.ly/2MCUVjJ>
Request for live Zoom testimony is found here - <http://bit.ly/3a0udu4>

USDA NASS

Pacific Region Farms & Land in Farms: <https://bit.ly/2ZG7ayM>

July & October 2020 Reports: <https://bit.ly/3bncfRO>

Coffee Industry valued higher now: <https://bit.ly/2LzJTes>

Family-owned farms account for 93% of Hawaii farms: <https://bit.ly/2LwyOuy>

The Independent Voice - February 2021

To view the full newsletter visit <http://bit.ly/3rvFlzF>
In this issue:

- Annual Membership Meeting
 - The Legislature needs to Hear Our Voices
 - Proper Pesticide Use for CLR and CBB
 - COVID-19 Vaccine for Essential Workers in Agriculture
 - Videos: Pruning Coffee Trees
 - HDOA CBB Subsidy Application
 - Upcoming Coffee Nutrition Talk
 - Researchers Assess Coffee Composition
 - TricorBraun Flex (Pacific Bag) Price Hike
 - African Coffee Bureau Supports KCFA
 - Recipe: Indonesian Avocado Coffee Shake
-

Hawaii & Pacific Basin Farm Service Agency February 2021 Newsletter

To view the full newsletter visit <http://bit.ly/3uqioWg>
In this issue:

- USDA Offers Secure New Options for Signing and Sharing Documents Online
- USDA Temporarily Suspends Debt Collections, Foreclosures and Other Activities on Farm Loans for Several Thousand Distressed Borrowers Due to Coronavirus
- USDA Offers New Forest Management Incentive for Conservation Reserve Program
- Change to Policy on Filing a Notice of Loss for Grazed Forage Producers with NAP Coverage
- USDA Extends General Signup for Conservation Reserve Program
- February 2021 Interest Rates

- Dates to Remember
 - Sign Up Today for Text Alerts from FSA
-