

HARC

Coffee Research Report

Chifumi Nagai, PhD

**Hawaii Agriculture Research Center
(HARC)**

**July 21, 2012
HCA Conference
Waikapu, Hawaii**



HARC's Coffee Research

- **Produce high-quality coffee cultivars with disease- and pest-resistance**
- **Understand the biology of coffee development**
 - DNA Sequencing of canephora coffee (de Kochko et al 2011)
 - Evolutionary History of Coffea arabica (Yu et al 2011)
 - Characterization of prolyl oligopeptidase genes in two coffee cultivars, typica and mokka (Singh et al 2011)

Specialty High Value Agroforestry Forestry Trial at Maunawili

- Inter-cropping of selected Koa and coffee with high cupping quality
- HARC Maunawili Station, Oahu
3 acre, un-irrigated, elevation 450 ft
- Selected arabica varieties
- PI: Nick Dudley, NRCS- USDA funded





International *canephora* Sequencing Consortium

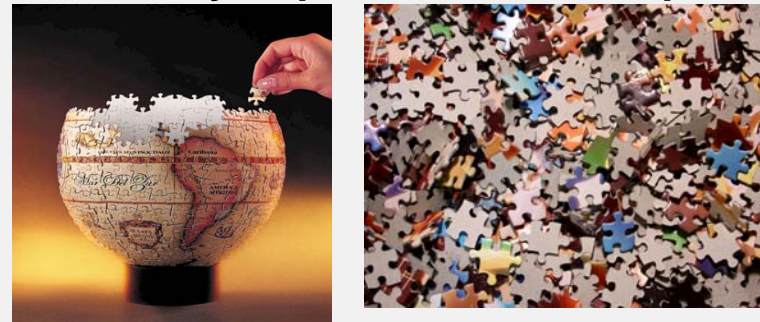


Coffea canephora
(Robusta coffee)
 $2n=44$ (DH)



Sequencing 454 Sequencer Illumina

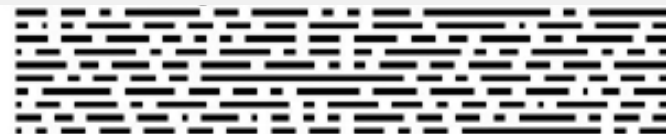
Assembly of pieces to a whole picture



Genome annotation

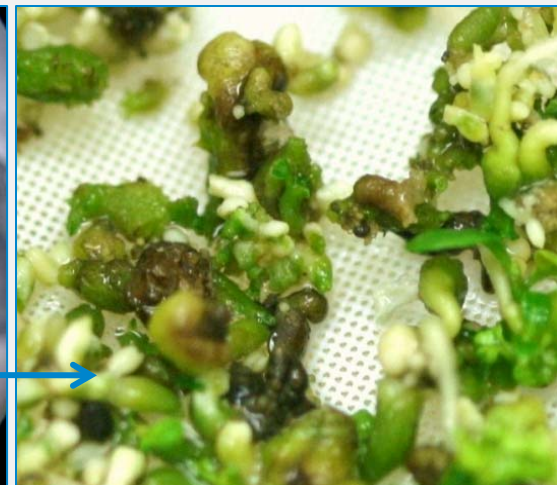
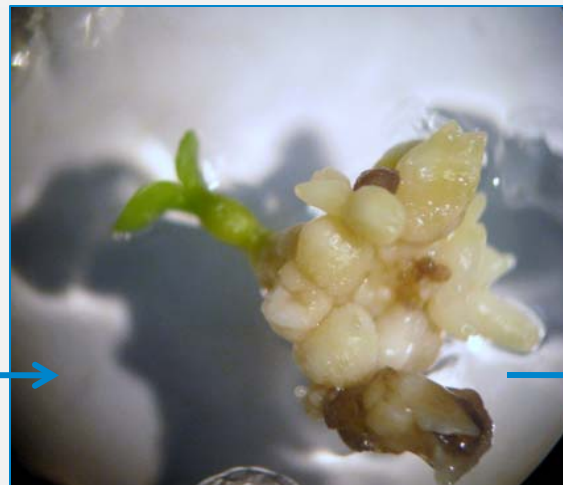
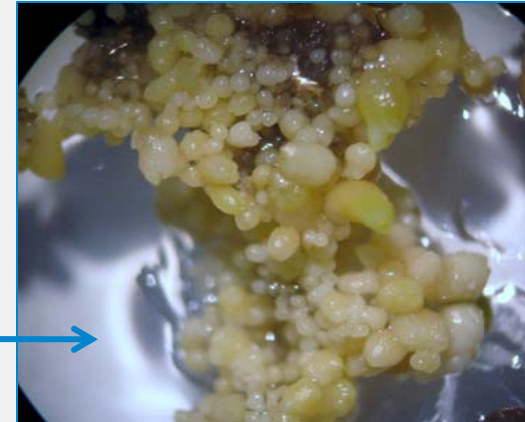
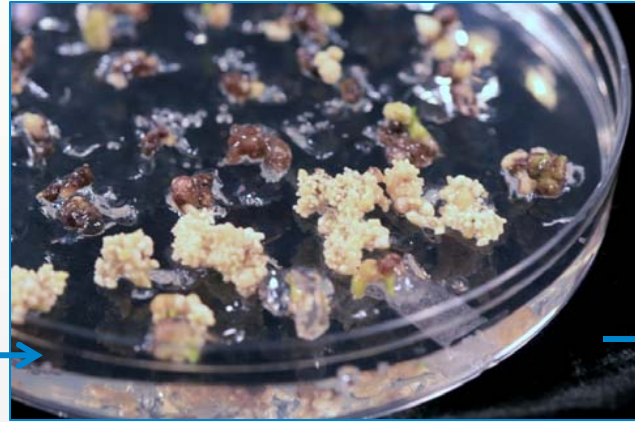
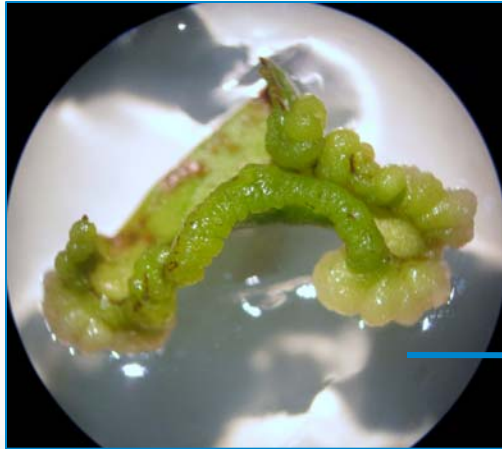
- Identifying the locations of genes and the coding regions in a genome
- Determine what those genes do.

Once a genome is sequenced, it needs to be annotated to make sense of it!



De Kochko et al (2011)

Cloning/ Tissue Culture of Selected Hawaiian Arabica Hybrids



Sub-contracted from HCA/ HCGA for SCBGP-FB, 2010-2012

RITA[®] , Temporally Immersion System



RITA[®] system



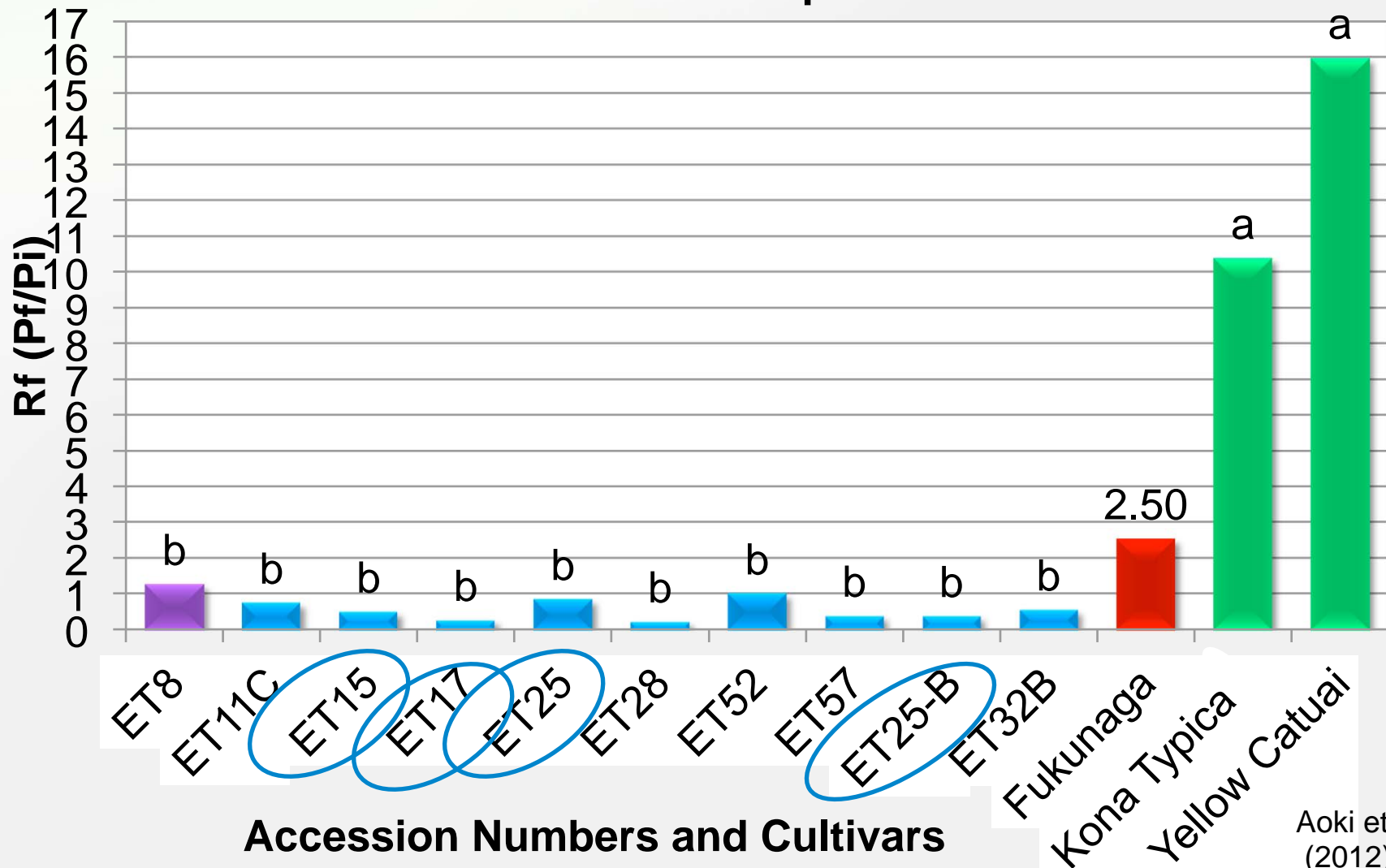
Acclimatization: Sterile environment to soil



Nematode Resistant Ethiopian arabica



Nematode Reproductive Factors of *M.konaensis* on semi-wild Ethiopian arabica



Aoki et al
(2012)

Meloidogyne konaensis reproductive factors (Rf)
of 4 Ethiopian arabica progeny
(8 months after 1000 egg inoculation)

Parents	Reistant	Rf	Susceptible	Rf	Total
Et15-10	4	<1.0	1	26.0	5
Et25	2	<1.0	3	2.6-11.7	5
Et17	5	<1.0	0	-	5
Et25B	5	<1.0	0	-	5

B. Sipes unpublished data 2012



Metabolomic Analysis of Coffee

Collaboration with Suntory Business Expert Limited and Innovation Center for Medical Redox Navigation, Kyushu University, Fukuoka,



- Chemical component information in arabica coffee using LC/MS analysis
- Obtained 2000-4000 chemical components in green beans from 8 cultivars grown at HARC, Kunia Field.
- Separated varieties clearly by PCA score of total samples
- Expect that quality of coffee correlates to both genotypes and chemical components- metabolomics





NHK series: Dramatic Life
" Coffee: Aroma which manipulated mankind"
Dec19,2011, NHK BS2 Channel

HARC Coffee Research Team and Collaborators

HARC

Chifumi Nagai
Ming Li Wang
Sayaka Aoki
Lance Santo and Kunia staff
Nick Dudley and Maunawili staff
Mel Jackson

HCGA

Univ. Illinois
Ray Ming
Texas A&M U, Weslaco
Qing Yi Yu
Ratnesh Singh

CTAHR- UH
Brent Sipes

USDA-ARS PBARC
Tracie Matsumoto
Roxana Cabos

University of Ochanomizu, Tokyo
Hiroshi Ashihara

CATIE – Turriba, Costa Rica
Carlos Astorga

Suntory Beverage & Food Limited
Koich Nakahara

FOFIFA , Madagascar
Jeanjacques Rakotomalala

ICGN (International Coffee Genome Network)

Funding: USDA-ARS, HDOA, SCBGP-FB, 2010-2012